

Fishing gear deposit system

for the protection of fisheries resources and
conservation of the marine environment



Subong Park

Pukyong National University

CONTENTS

Implementation of the
Fishing gear deposit system



Introduction



Introduction to the fishing gear deposit system



Roles by implementing Entities



Future challenges



I

Introduction

- ◇ Developed by DuPont in the United States in 1935, industrialized after World War II
- ◇ Introduced to Korea in 1966, used in 41 industries including gillnets and traps

Advantages

Low cost
Excellent strength
Easy to process

Disadvantages

Non-degradable
Environmental destruction
Air pollution

2 Background of the fishing gear deposit system introduction

Problems of Abandoned Fishing Gear

- ◇ **(Marine pollution)** Abandoned fishing gear contributes to **36,000 tons** of marine plastic waste, accounting for **54%** of the 67,000 tons of marine plastic waste in Korea
- ◇ **(Resource damage)** Ghost fishing caused by abandoned fishing gear results in an **annual loss of 410 billion KRW**, equivalent to **10%** of Korea's total fishery catch
- ◇ **(Marine accidents)** There have been an **average of 260 safety accidents** related to fishing vessels caused by abandoned gear over the past five years, accounting for **14%** of the total **1,880 fishing vessel accidents**



Implementation of the fishing gear deposit system

- ◇ ('21. 5.) Establishment of the **'First basic plan for the management of marine debris and marine contaminated sediments'** following the enforcement of the marine debris management act
 - * The plan includes the introduction of the gear deposit system as part of the strengthened management of marine sources.
- ◇ ('22. 1.) The full revision of the Fisheries Act was passed in the Cabinet meeting, laying the groundwork for **the full-cycle management of fishing gear and the fishing gear deposit system**
 - * Article 81 (Promotion of Recovery of Fishing Gear and Buoys), Article 82 (Handling of Unrefunded Deposits), Article 83 (Gear Deposit Management Center), Article 84 (Financial and Technical Support)

Implementation of the fishing gear deposit system

- ◇ ('23. 3.) Establishment of the **"Fishing gear deposit management center"** under the Korea Fisheries Resources Agency to operate the gear deposit system
- ◇ ('24. 1.) Partial amendment of the subordinate regulations of the Fisheries Act

**The world's first implementation of
the "Fishing gear deposit system"!
(12, 1, 2024)**



II

Introduction to the fishing gear deposit system

1 Introduction to the fishing gear deposit system

Fishing gear deposit system

A system **that refunds the deposit** when fishing gear is returned to the **designated collection site**

- ※ The deposit promotes the retrieval of fishing gear that might otherwise be discarded indiscriminately, thereby reducing environmental burden



<Similar system>



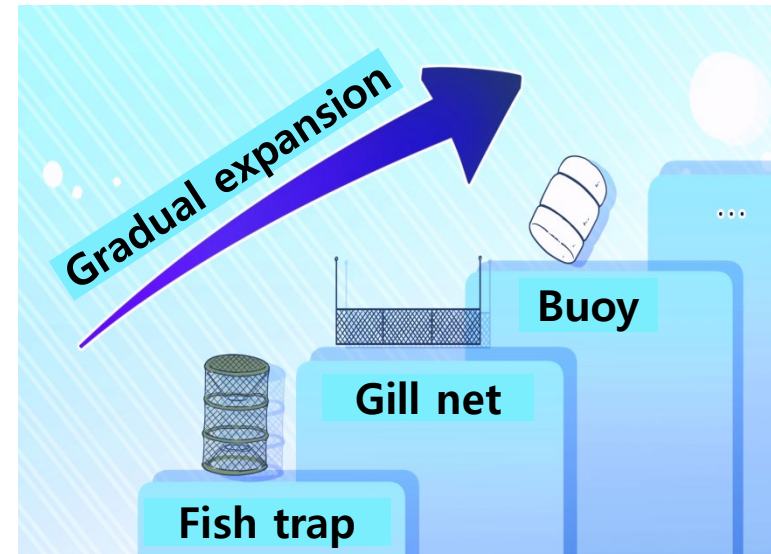
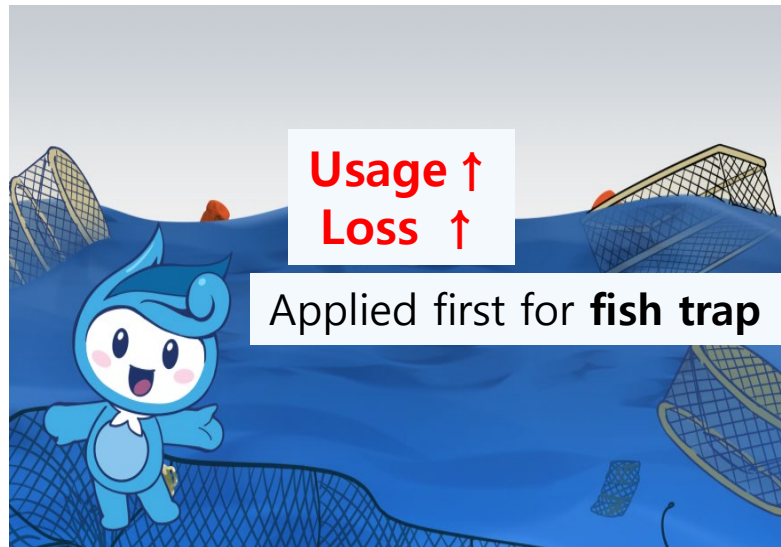
① Disposable cup deposit system



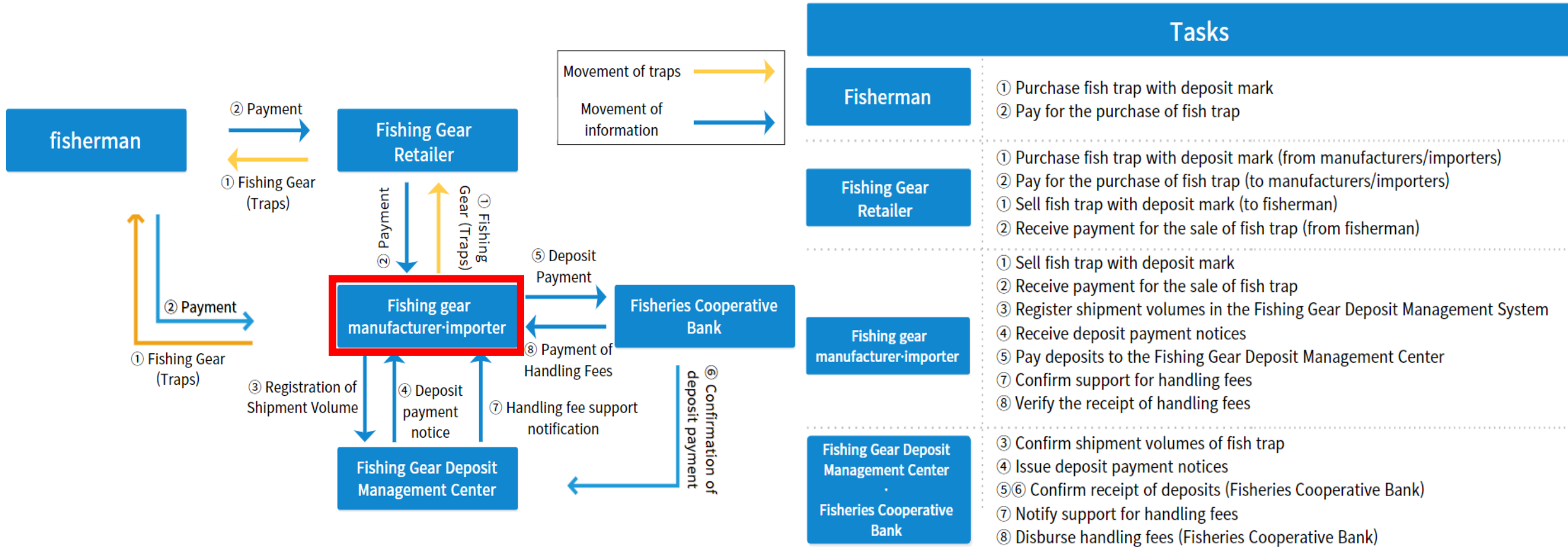
② Bottle deposit system

Subject to the fishing gear deposit system

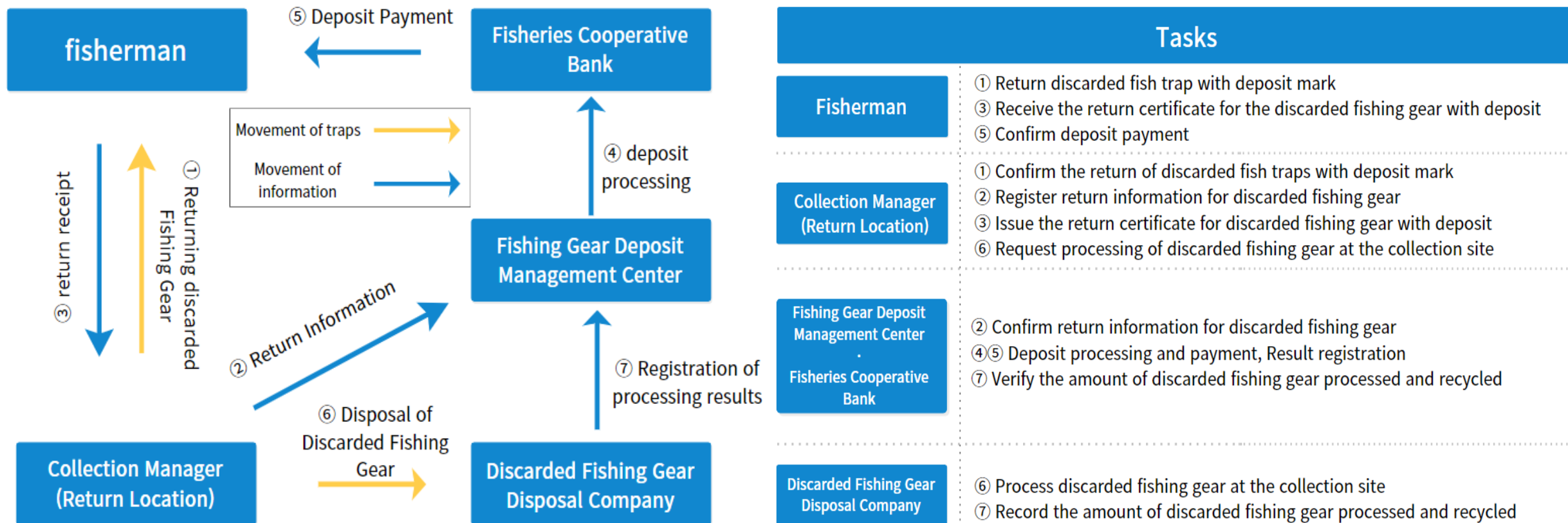
- ◇ Fishing gear deposits are available for fishing gear and buoys, **applied first for fish trap** starting from '24. **1.12** the first time of the fishing gear deposit system
- ◇ Plans to eventually expand to **gillnets, buoys**, etc.



Fishing gear deposit **collect** Process



Returning discarded fishing gear and refunding deposit process





III

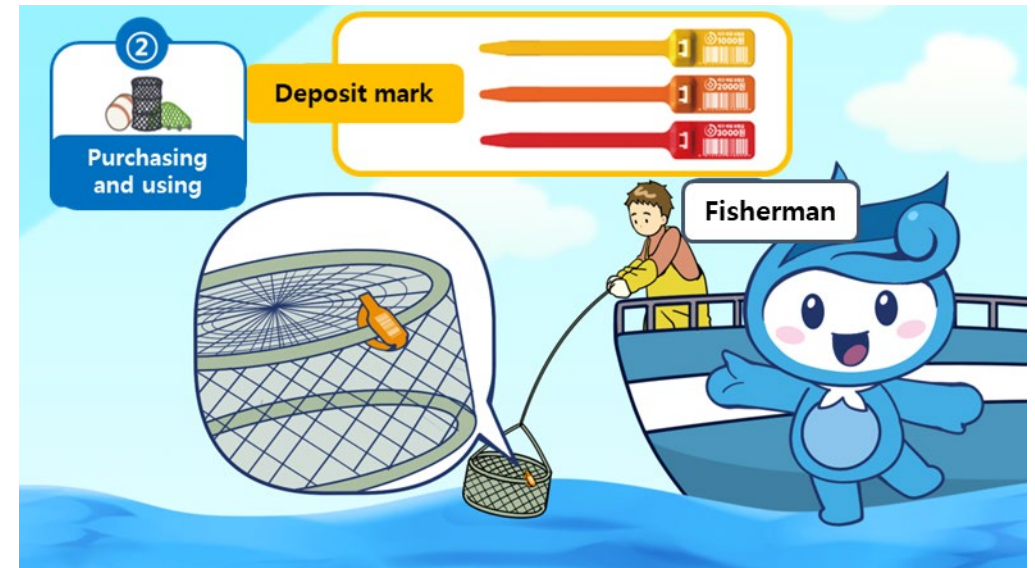
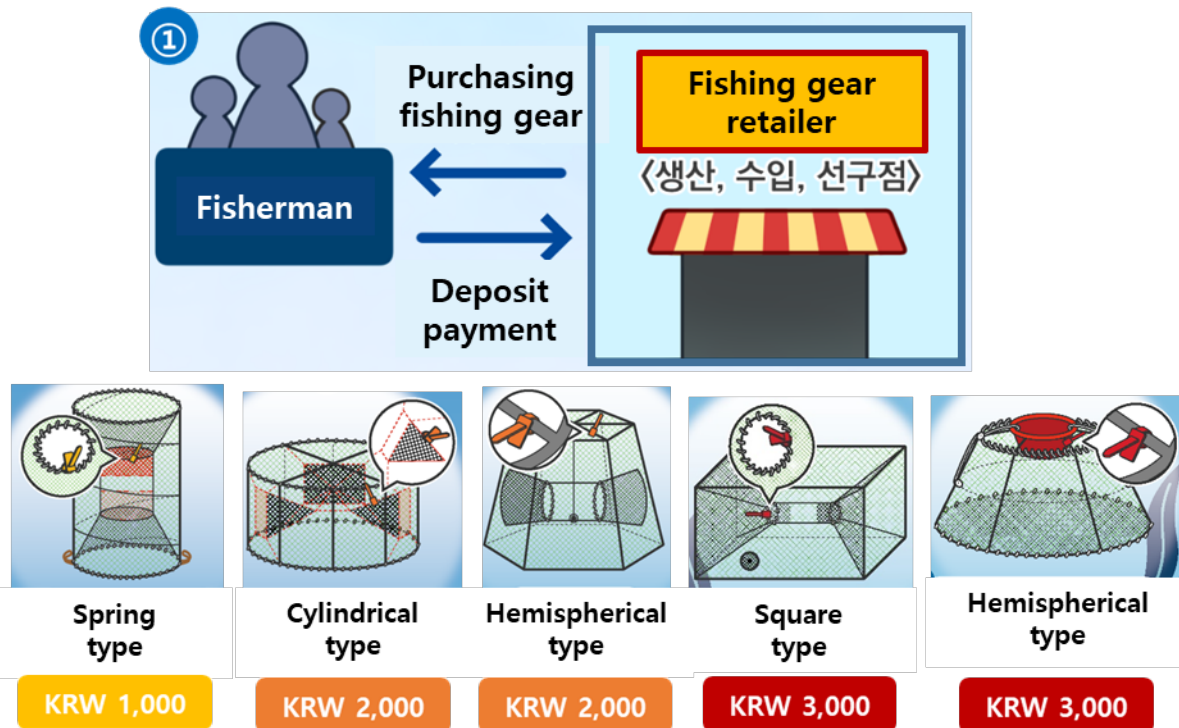
Roles by implementing Entities

1

The role of fishermen

Purchasing and using fishing gear

- ① (Purchasing fishing gear) Purchase from a fishing retailer with a deposit mark for each type of gear
- ② (Using fishing gear) Conduct fishing operations using fishing gear with a deposit mark



Returning discarded fishing gear and refunding deposits

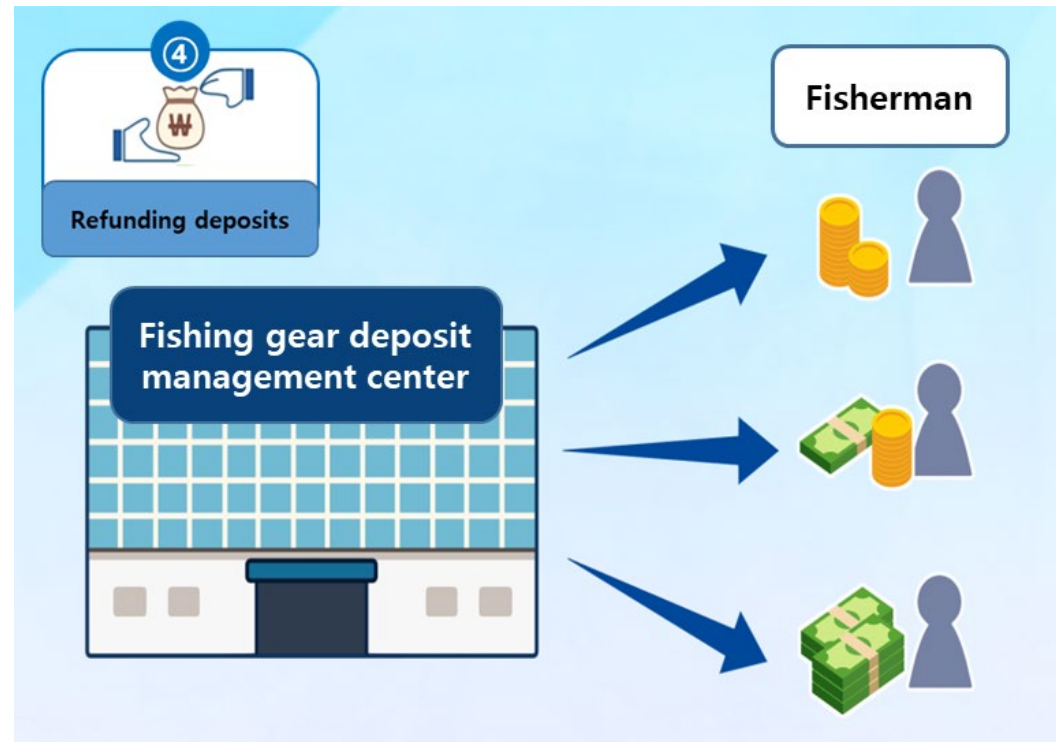
③ (Returning discarded fishing gear) Returning unused, **deposit-marked discarded gear** to a nearby **return location**

⇒ Return location are available at **181 nationwide**, return to the collection manager managing the return location



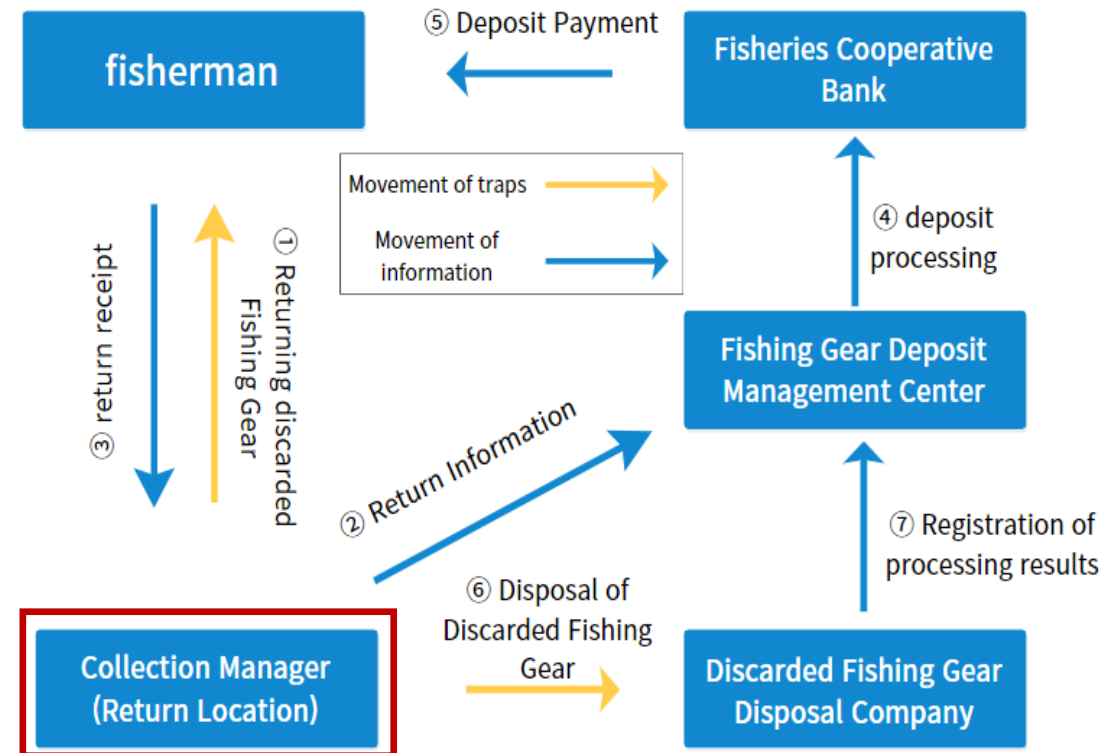
Returning discarded fishing gear and refunding deposits

- ④ (Refunding deposits) Receipt of discarded fishing gear **return certificate**
- Confirmation by fishing gear deposit management center
 - Refunding deposits



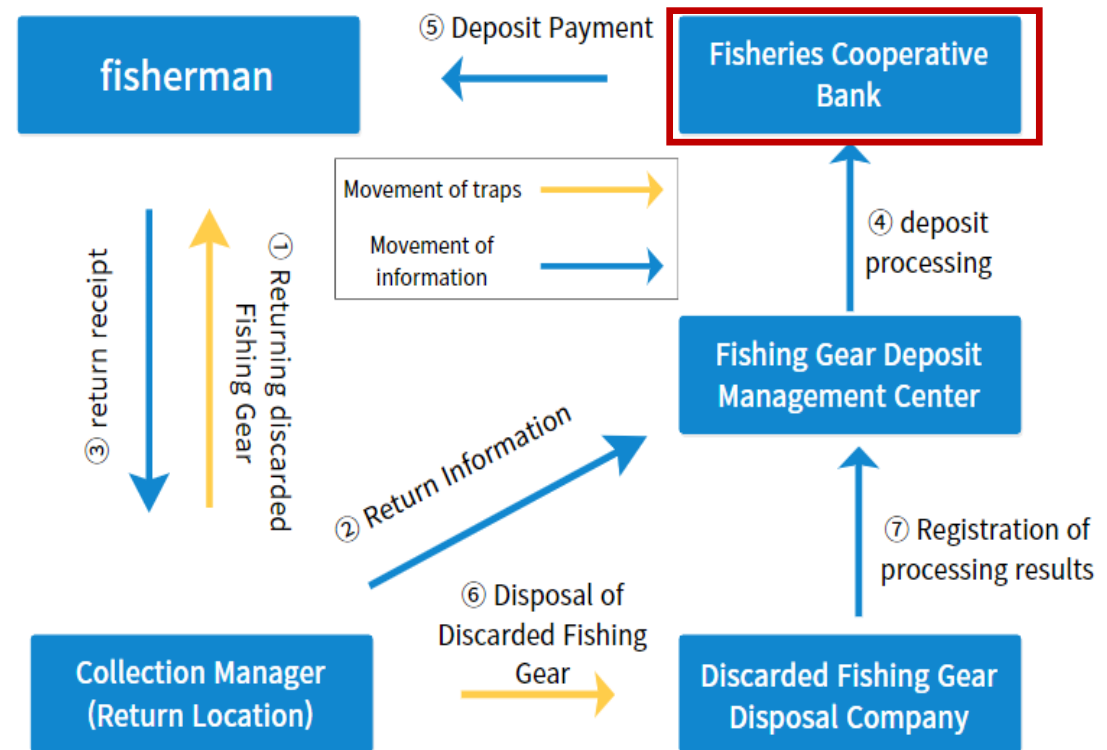
Collection manager entrusted tasks

- ① **(Confirmation of abandoned fishing gear return)** Attaching deposit mark on discarded gear returned by a fisherman and **verify authenticity**
 - ② **(Enter return information)** Enter return information at fishing gear deposit management system
 - ③ **(Issuance of return certificate)** Issuance of return certificate to the fisherman
 - ④ **(Disposal of discarded fishing gear)** Transfer discarded fishing gear to a nearby collection site or a disposal company, then enter the processing results into the system
- ※ Consult with the Fishing gear deposit management center when processing abandoned fishing gear



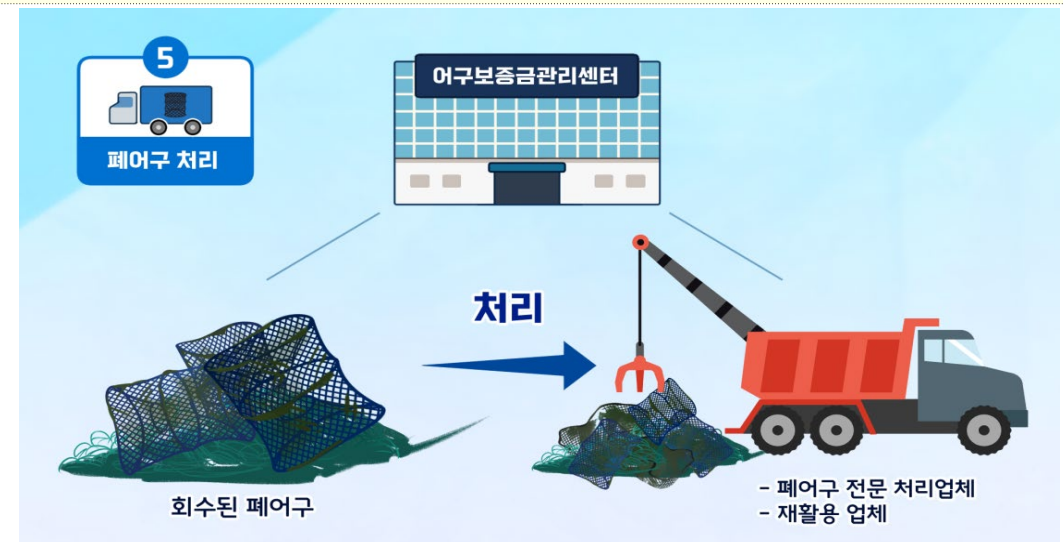
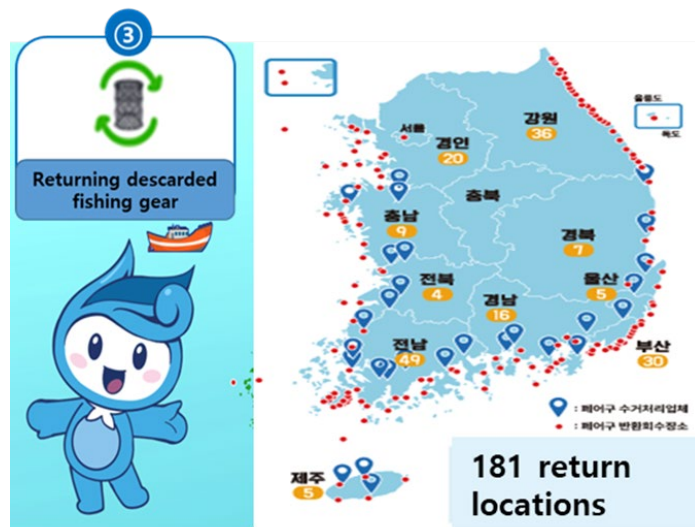
Refund fishing gear deposit

- ① **(Confirmation)** Confirmation of the discarded fishing gear return certificate by the center
- ② **(Request refund)** Request for a deposit refund from the center to be sent to the bank
- ③ **(Refund deposit)** Refund deposit to the fisherman
- ④ **(Register results)** Register payment results in the Deposit Management System



Collection and disposal of discarded fishing gear

- ◇ **(Designation of collection locations)** Designation of discarded fishing gear collection management locations considering accessibility (currently 181 locations, 69 permanent, 112 temporary)
- ◇ **(Collection of discarded fishing gear)** Selection of waste disposal companies for periodic collection and operation of collection facilities (can be entrusted to the Fisheries Cooperative Bank).
- ◇ **(Processing and management)** Processing of discarded fishing gear and entering related information into the deposit management system (can be entrusted to the Fisheries Cooperative Bank).





IV

Future challenges

1

Expansion of the fishing gear deposit system

Fishing gear and buoy deposit system



Gill net

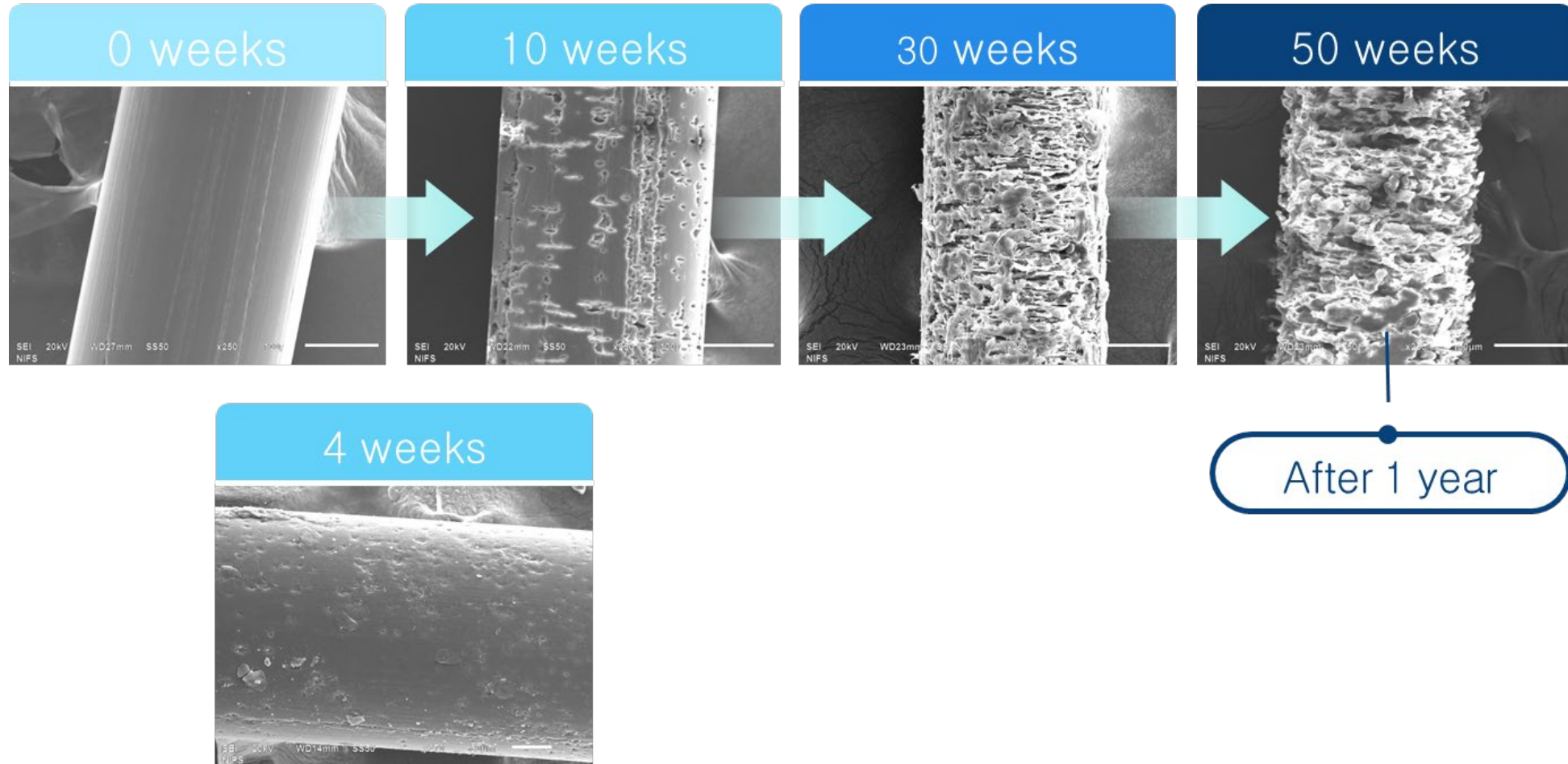


Bouy



Trap

Biodegradable fishing gear



함께해요!
어구보증금제도
2024년 1월 12일 시행



해양수산부



FIRA

한국수산자원공단
KOREA FISHERIES RESOURCES AGENCY